

# Hosanna (Praise Is Rising)

Words and Music by  
Paul Baloche and Brenton Brown

♩ = 114

## VERSE

E<sup>5</sup>



1. Praise \_ is ris - ing, eyes \_\_\_ are turn - ing \_ to You; .  
2. Hear \_ the sound \_ of hearts \_ re - turn - ing \_ to You; .

5

A<sup>2</sup>

E<sup>5</sup>



— We turn to You; — Hope \_\_\_ is  
— We turn to You; — In \_\_\_ Your

10

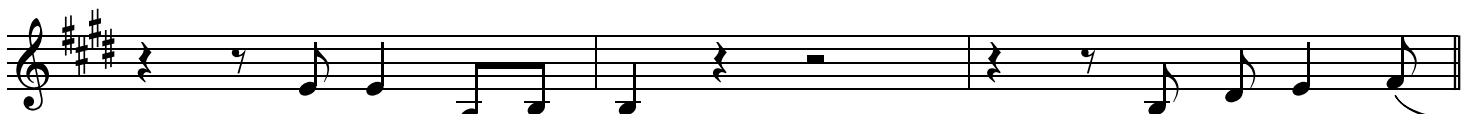
A<sup>2</sup>



stir - ing hearts \_\_\_ are yearn - ing \_\_\_ for You; \_\_\_  
King - dom bro - ken lives \_\_\_ are \_\_\_ made new, \_\_\_

14

E<sup>5</sup>



We long for You; \_\_\_ 'Cause when we see \_\_\_  
You make us new; \_\_\_

## PRE-CHORUS

17

B<sup>(4)</sup>

A

E<sup>5</sup>



— You, we find strength \_\_\_ to face the day; \_\_\_ In Your pres-



PRE-CHORUS

55 **B<sup>(4)</sup>** **A** **E<sup>5</sup>**

— You, we find strength — to face the day; — In Your pres-

59 **B<sup>(4)</sup>** **A** **1. E<sup>5</sup>**

- ence all our fears — are — washed a - way. 'Cause when we see

CHORUS

63 **2. E<sup>5</sup>** **B** **E<sup>sus</sup>** **E**

washed a - way. — Ho - san - na, ho -

68 **C#m<sup>7</sup>** **A<sup>2</sup>** **E<sup>5</sup>**

-san - na, — You are the God — who — saves us,

71 **B<sup>sus</sup>** **C#m<sup>7</sup>** **A<sup>2</sup>** **E<sup>sus</sup>**

wor - thy of all — our prais - es; — Ho - san -

75 **E** **C#m<sup>7</sup>** **A<sup>2</sup>** **E<sup>5</sup>**

-na, ho - san - na, — come have Your way — a - mong us;

79 **B<sup>sus</sup>** **C#m<sup>7</sup>** **1. A<sup>2</sup>** **2. A<sup>2</sup>**

We wel - come You here, — Lord Je - sus. — Ho -

ENDING

83

E<sup>SUS</sup> E E<sup>SUS</sup> E E<sup>SUS</sup>

Musical staff for measure 83, featuring a treble clef and a key signature of three sharps (F#, C#, G#). The staff contains five measures of music. The first four measures consist of whole rests. The fifth measure contains a quarter rest followed by a quarter note G5. The sixth measure contains a quarter note G5, a quarter note A5, and a quarter note B5, all beamed together. A repeat sign is placed after the sixth measure.

Ho - san -

89

E E<sup>SUS</sup>

1. E 2. E

Musical staff for measure 89, featuring a treble clef and a key signature of three sharps (F#, C#, G#). The staff contains six measures of music. The first measure has a quarter note G5. The second measure has a quarter rest. The third measure has a quarter note A5. The fourth measure has a quarter note B5. The fifth measure has a quarter note G5. The sixth measure has a quarter note G5. A repeat sign is placed after the fifth measure.

-na, ho - san - na. Ho - na.